

# Historische Kälte- und Klimatechnik e.V.

- 26215 Kolbenverdichter ARE 800,  
Bj. 1942
- 60326 NH<sub>3</sub>-Verdichter mit  
Dampfmaschine, Bj. 1929
- 60386 NH<sub>3</sub>-Verdichter, Bj. 1952
- 63477 NH<sub>3</sub>-Verdichter, Bj. 1929
- 83543 NH<sub>3</sub>-Verdichter, Bj. 1903

- 95015 NH<sub>3</sub>-Verdichter mit  
Dampfmaschine, Bj. 1916
- 96050 NH<sub>3</sub>-Verdichter, Bj. 1904
- 97688 2 NH<sub>3</sub>-Verdichter, Bj. 1924
- 97688 Klimaanlage, Bj. 1952
- 99762 NH<sub>3</sub>-Verdichter, Bj. 1944
- 99762 Hubkolbenverdichter, Bj. 1962



K. C. SHAW  
Baustahlverlegung

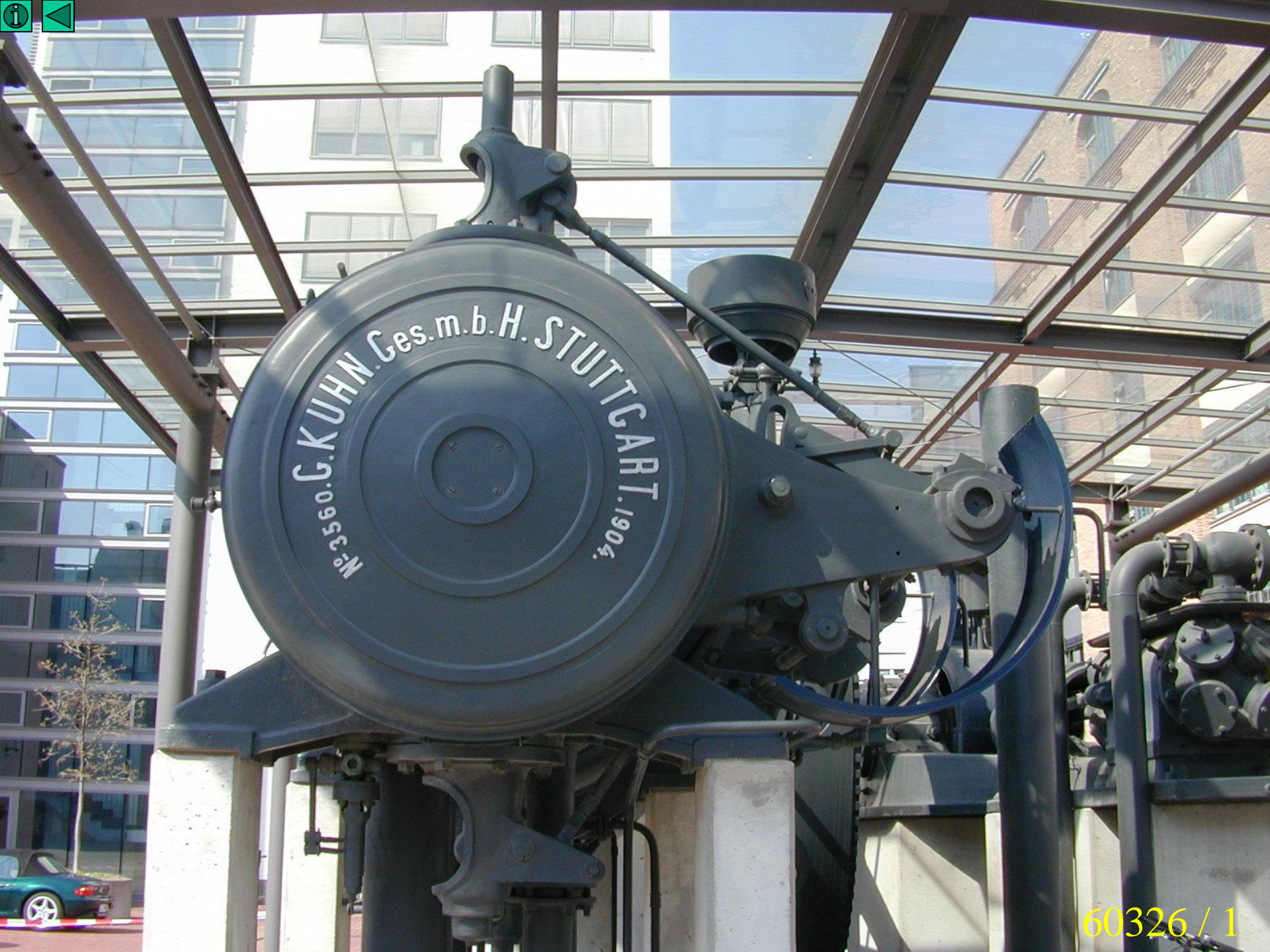
Fahrschule  
Hartmu  
Tanzen

Meininger  
Reserve

7



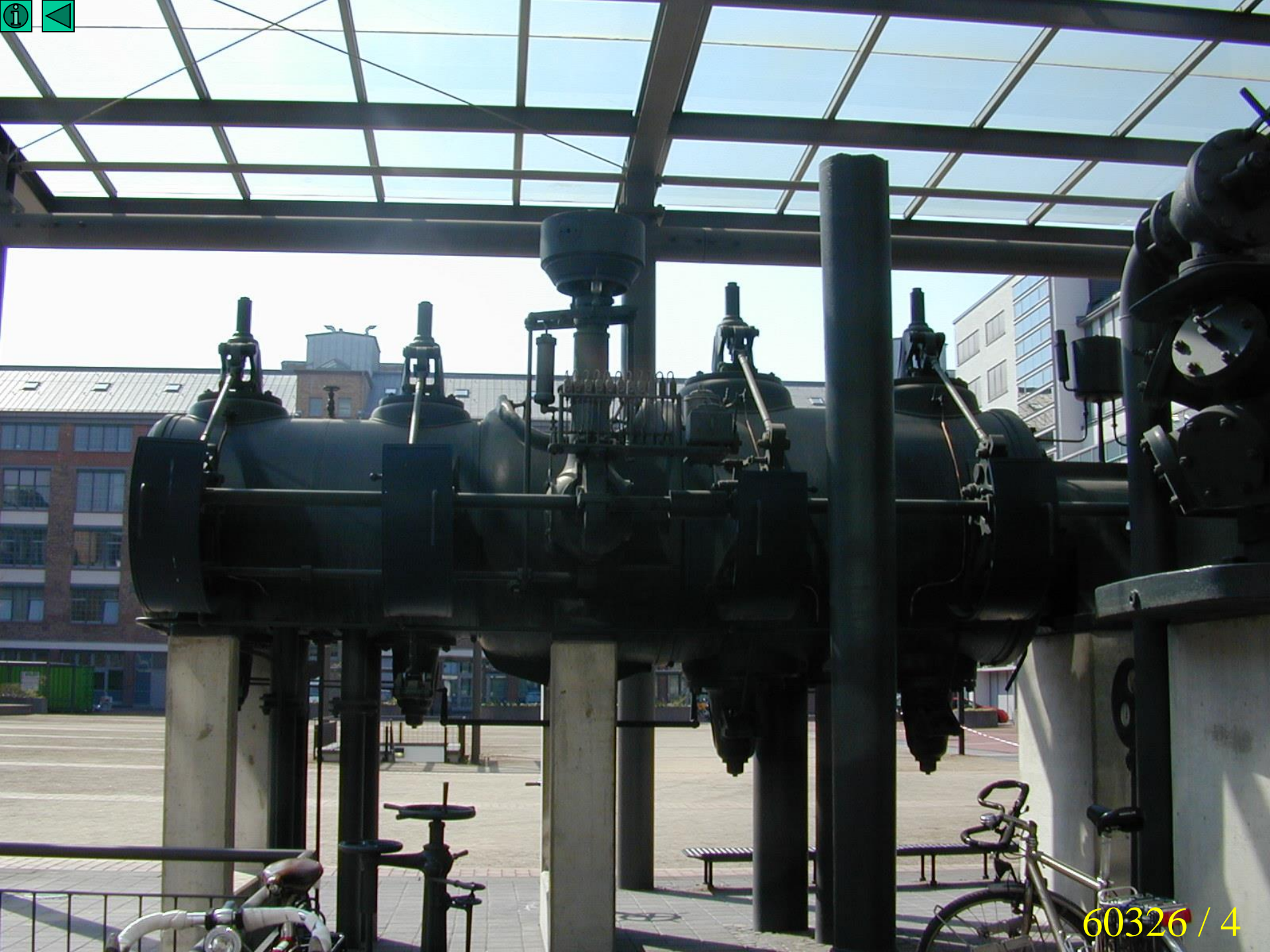
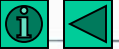
26215



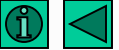
No 3590 G. KUHN. Ges. m. b. H. STUTTGART. 1904.

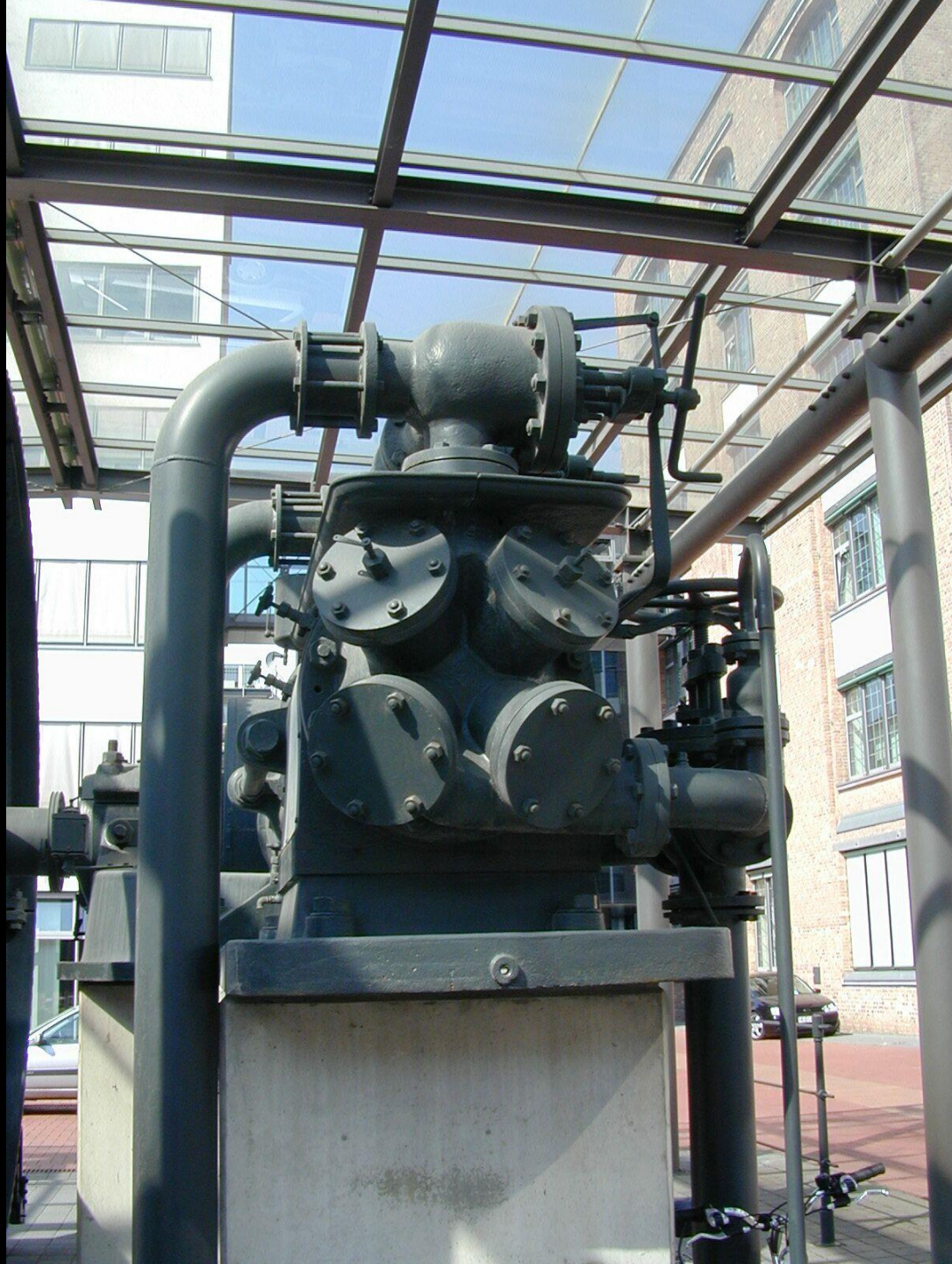


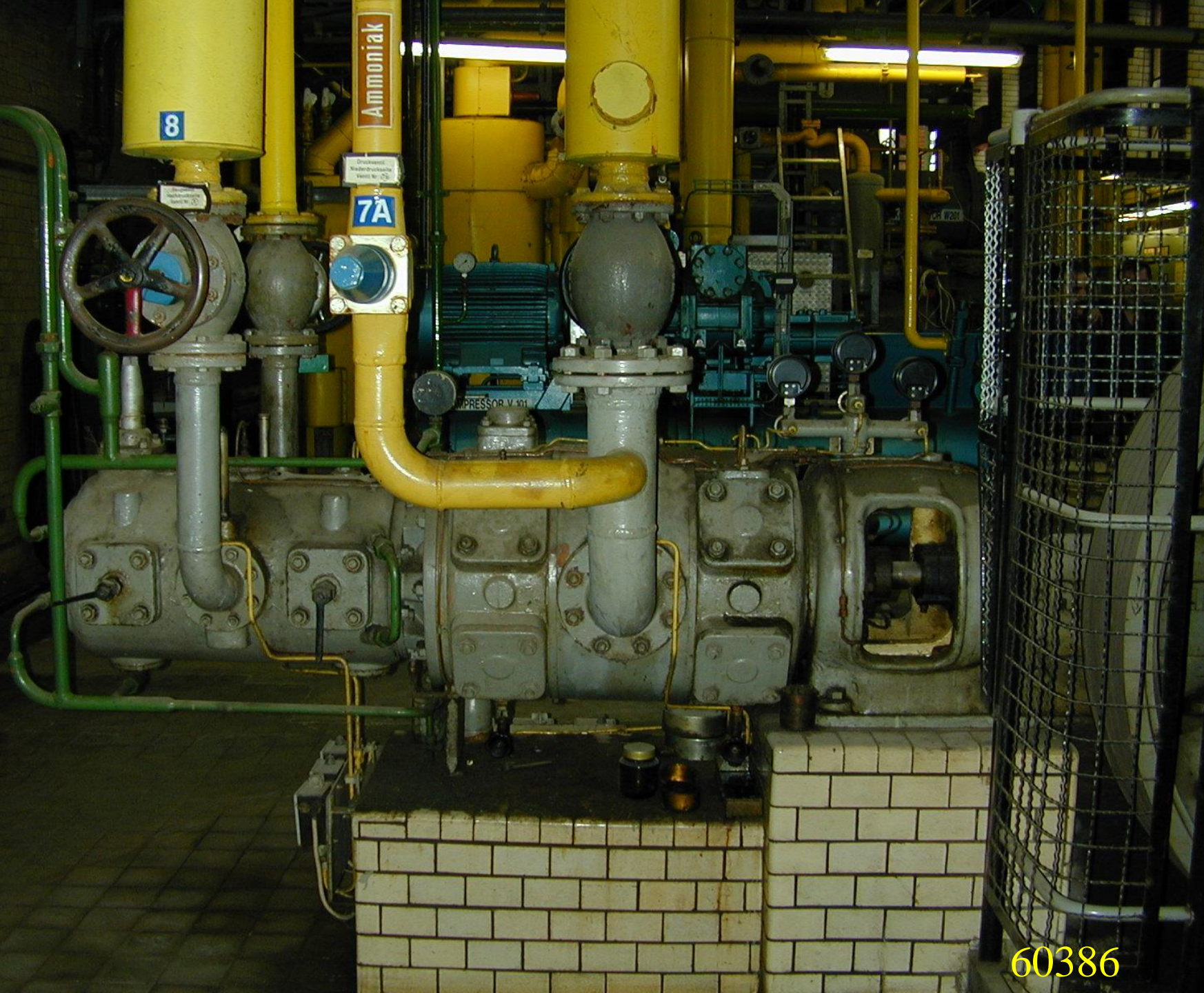












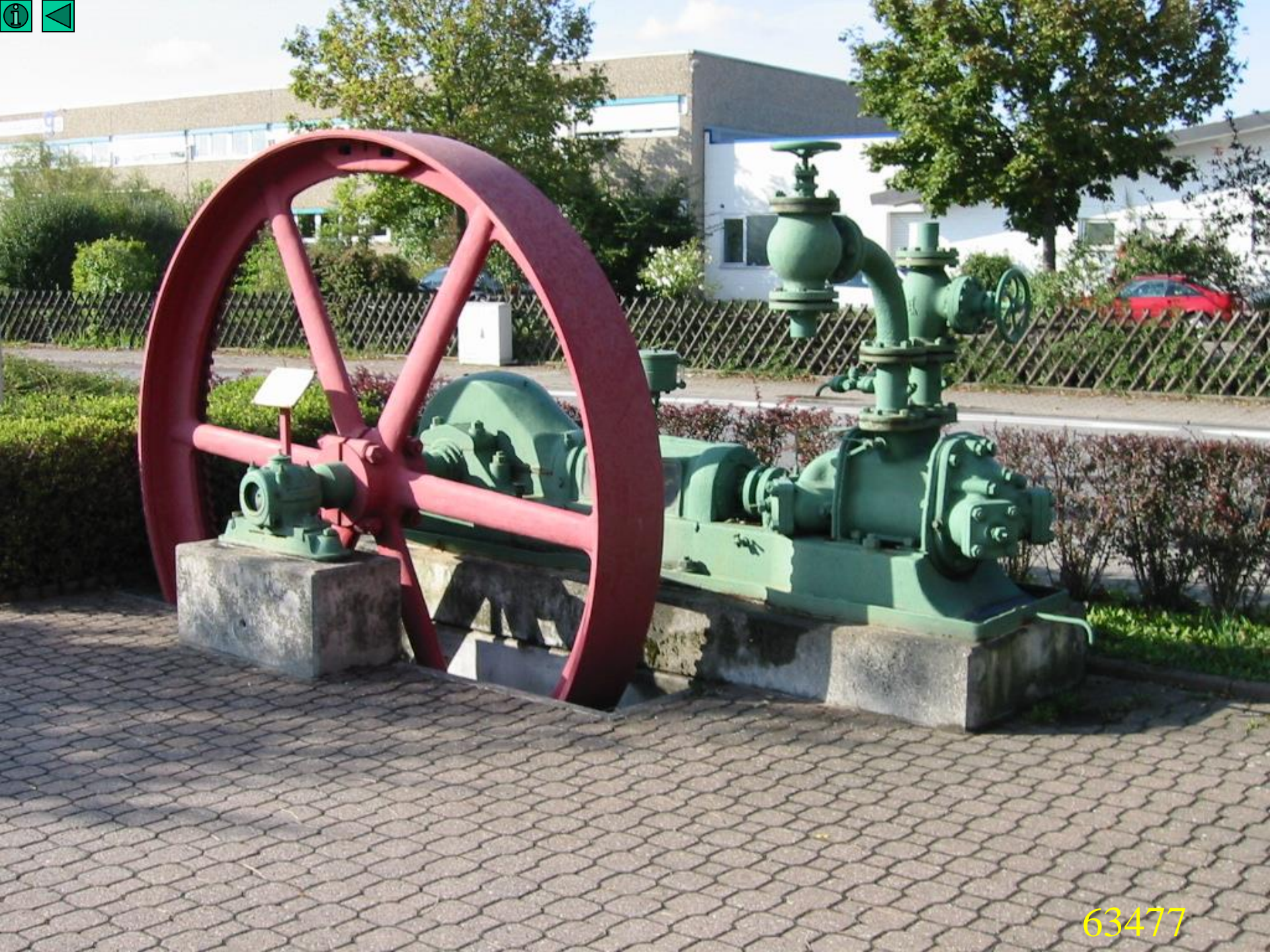
Ammoniak

8

7A

PRESSOR V 101

60386



63477



83543



**Bierbrauerei von B. Scherdel.**

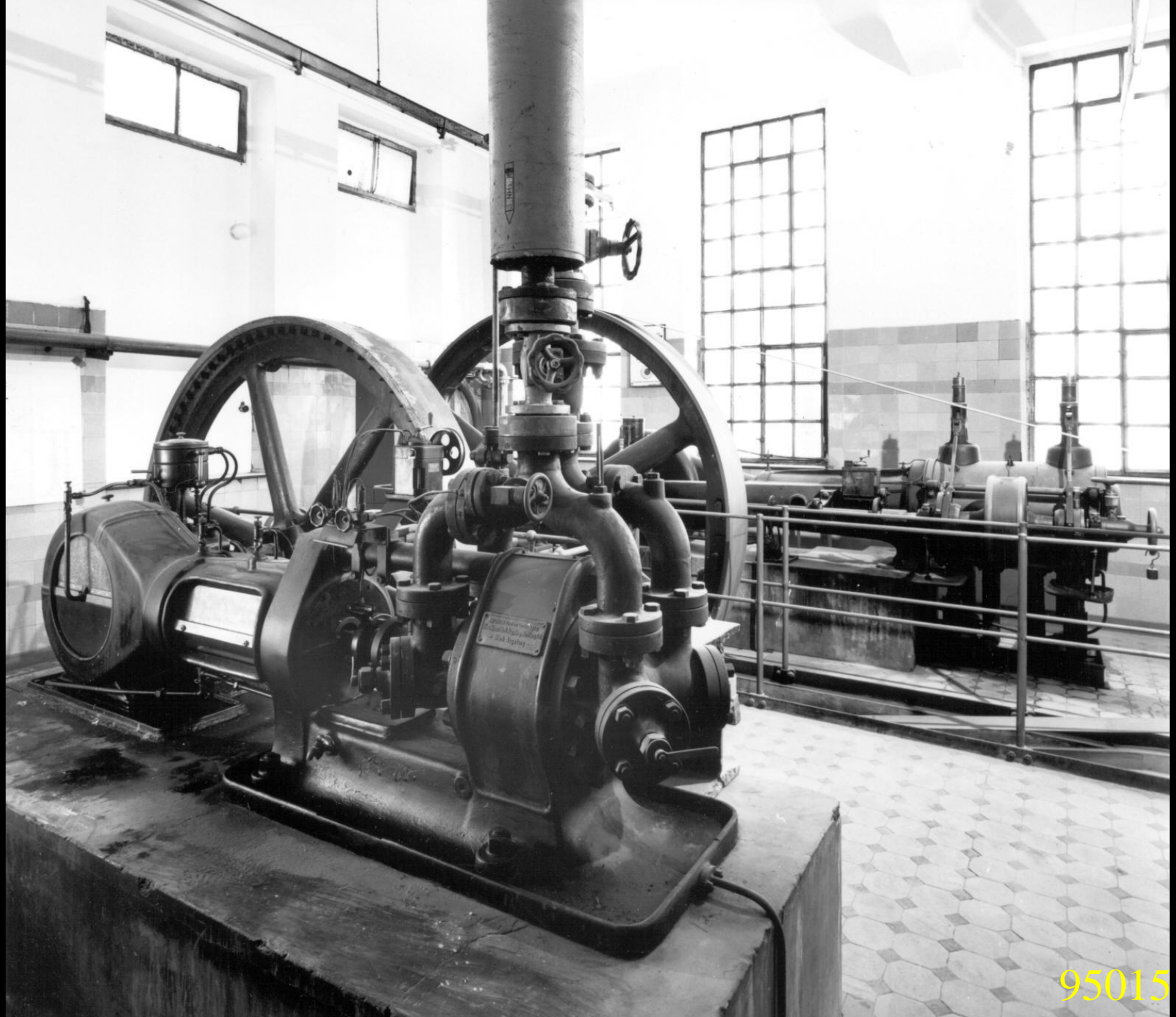
9



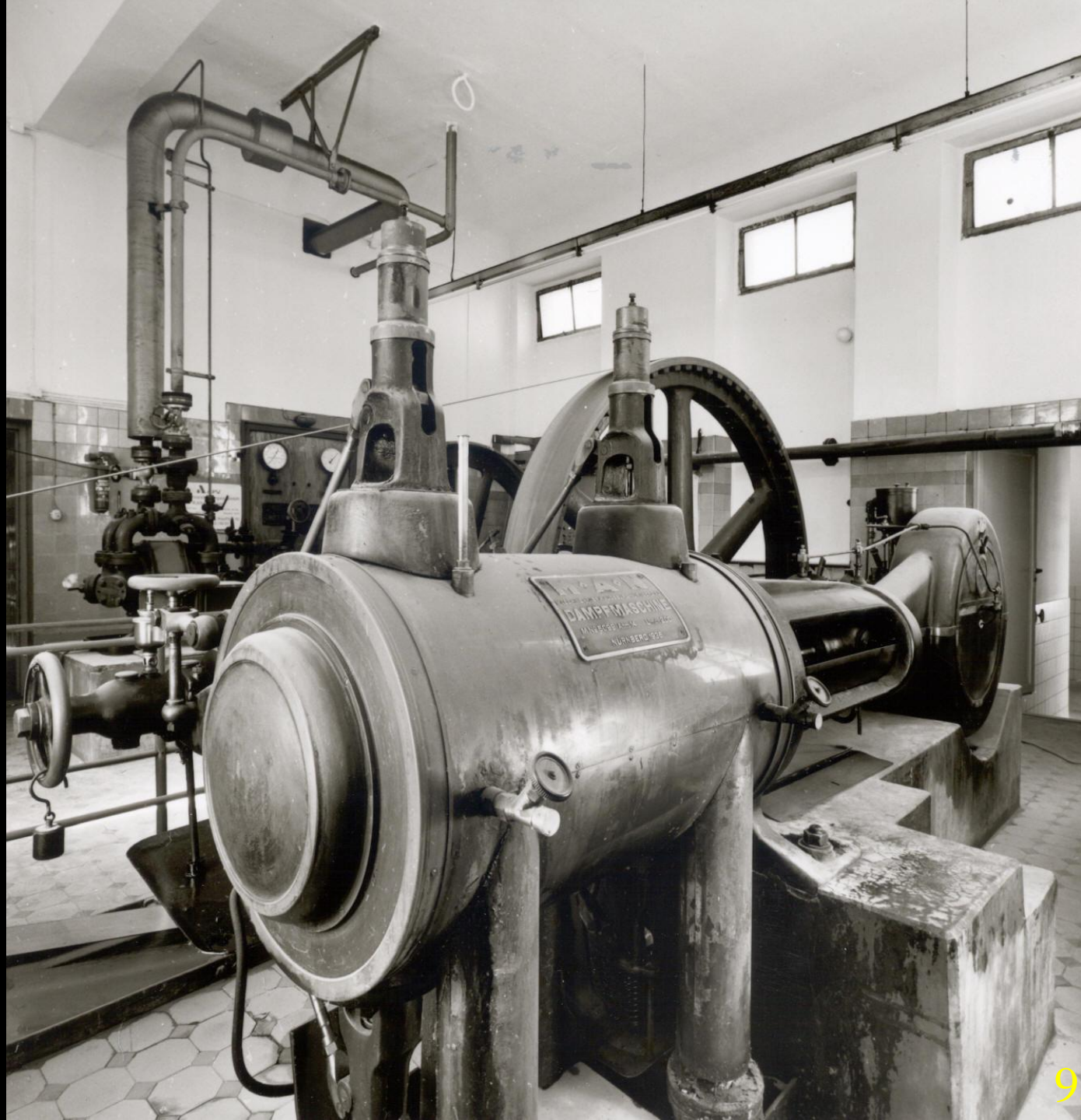
10  
11

11

95015 / 1

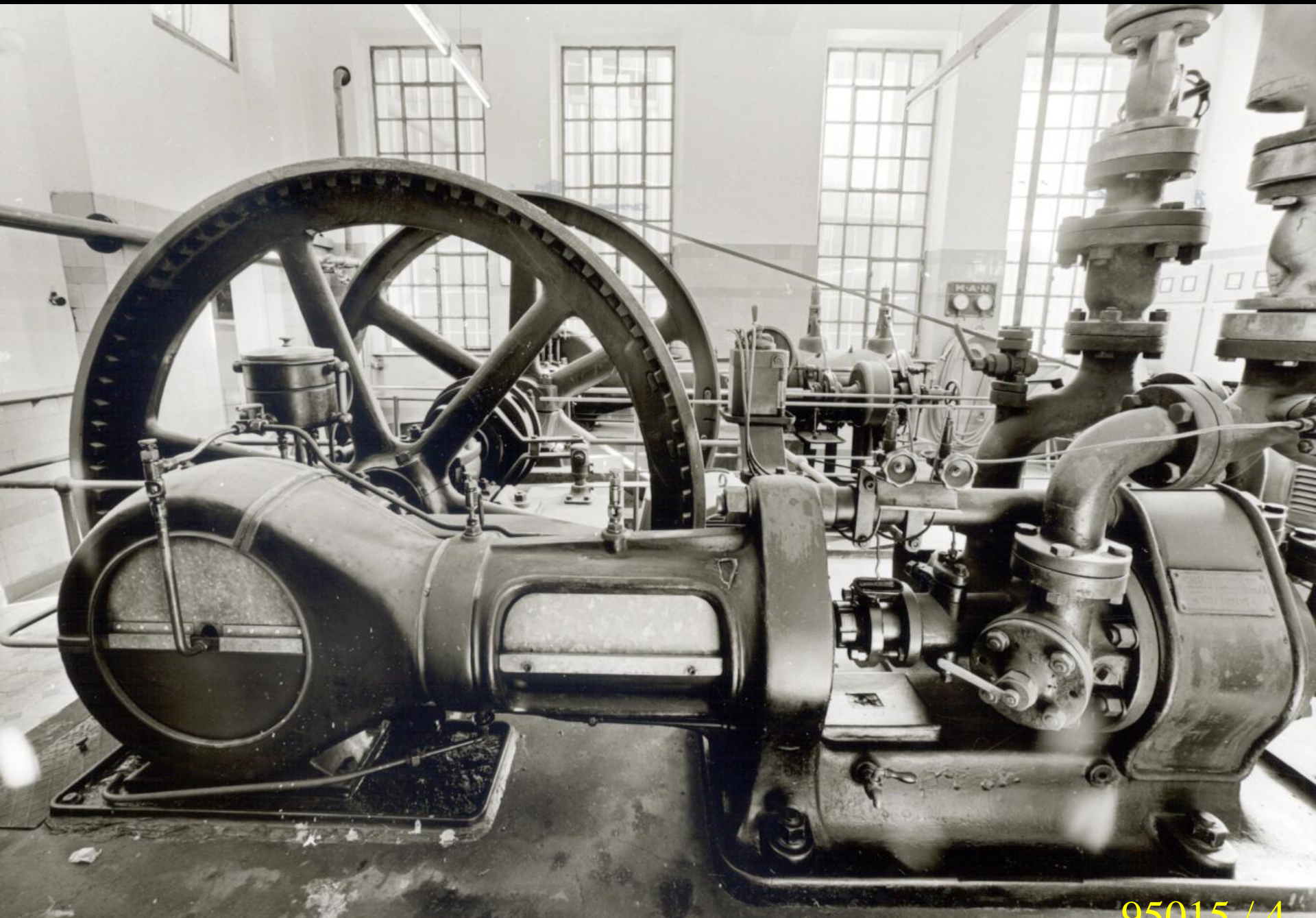


95015 / 2



95015 / 3

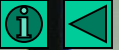




95015 / 4







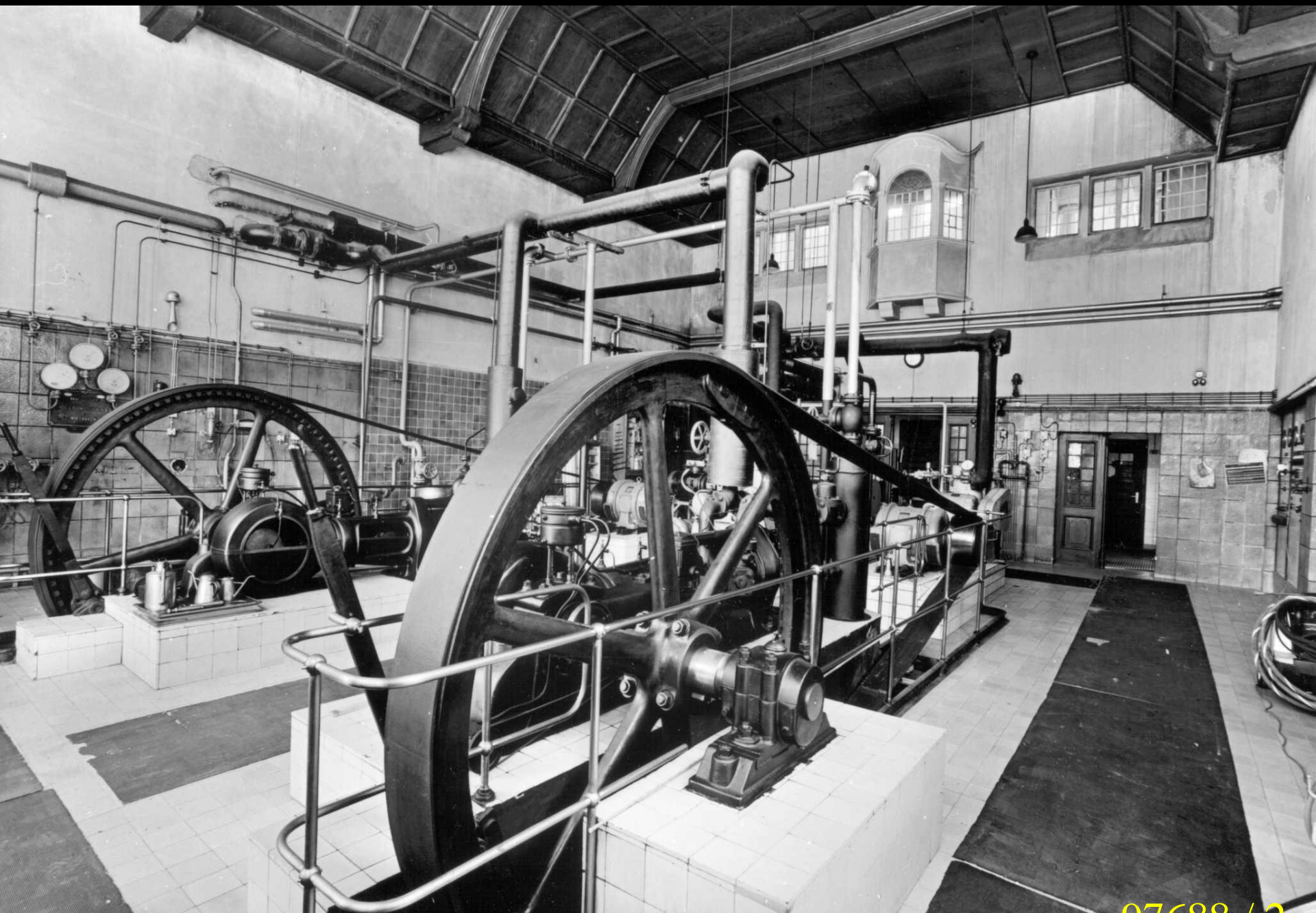
GESELLSCHAFT  
FÜR  
LINDE'S EISMASCHINEN A.G.  
WIESBADEN. N° 5108/03  
1904



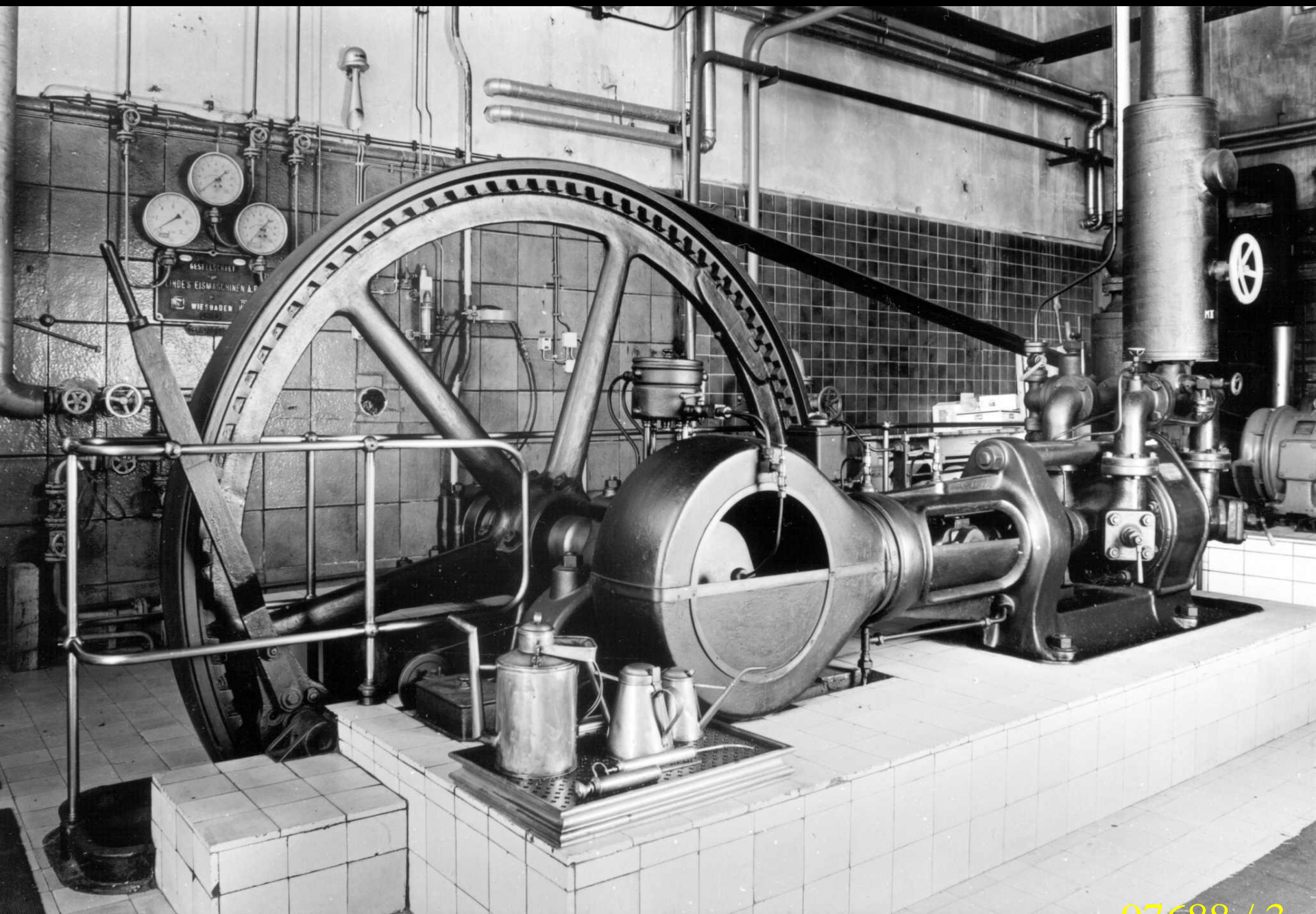
96050



97688 / 1



97688 / 2



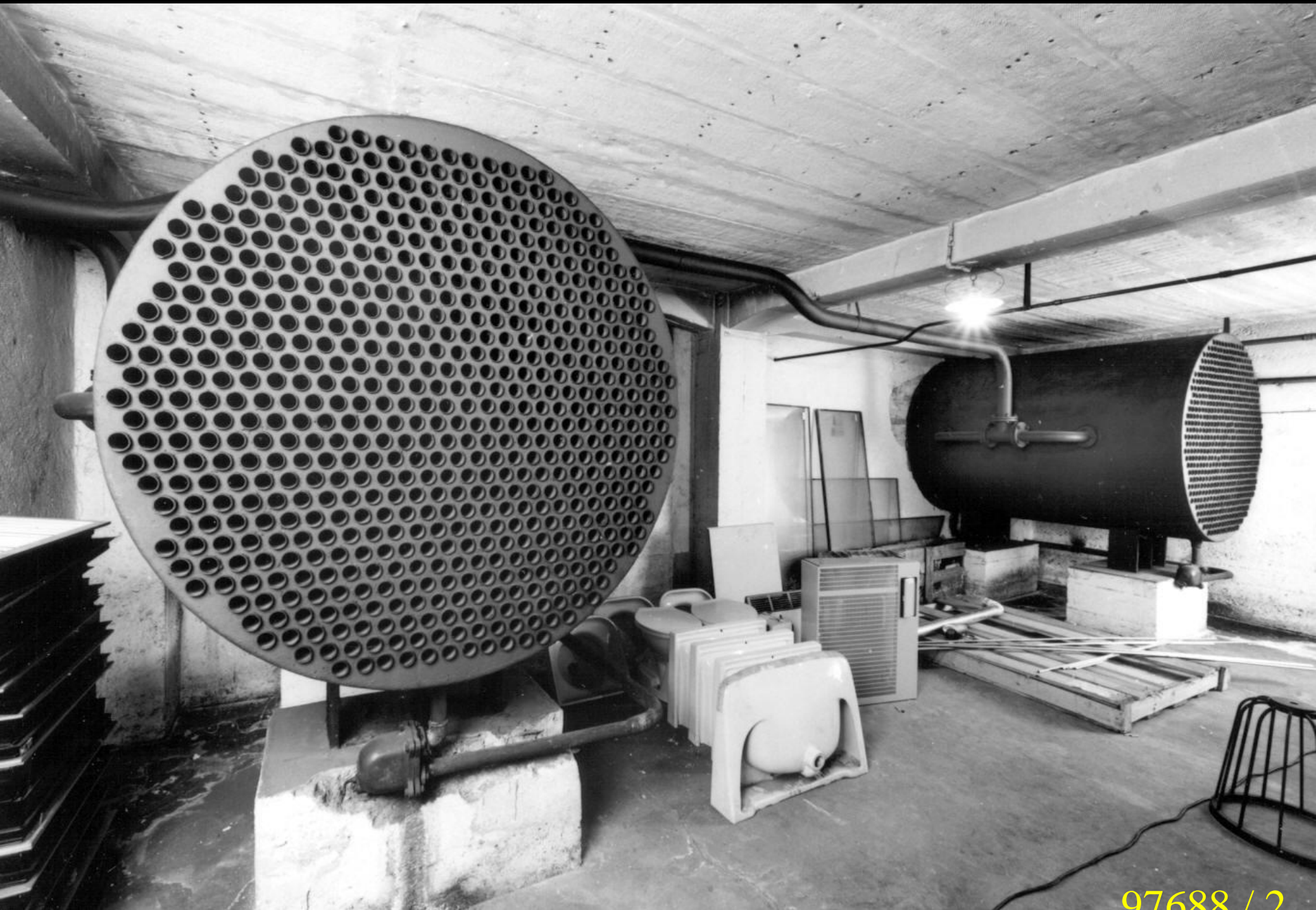








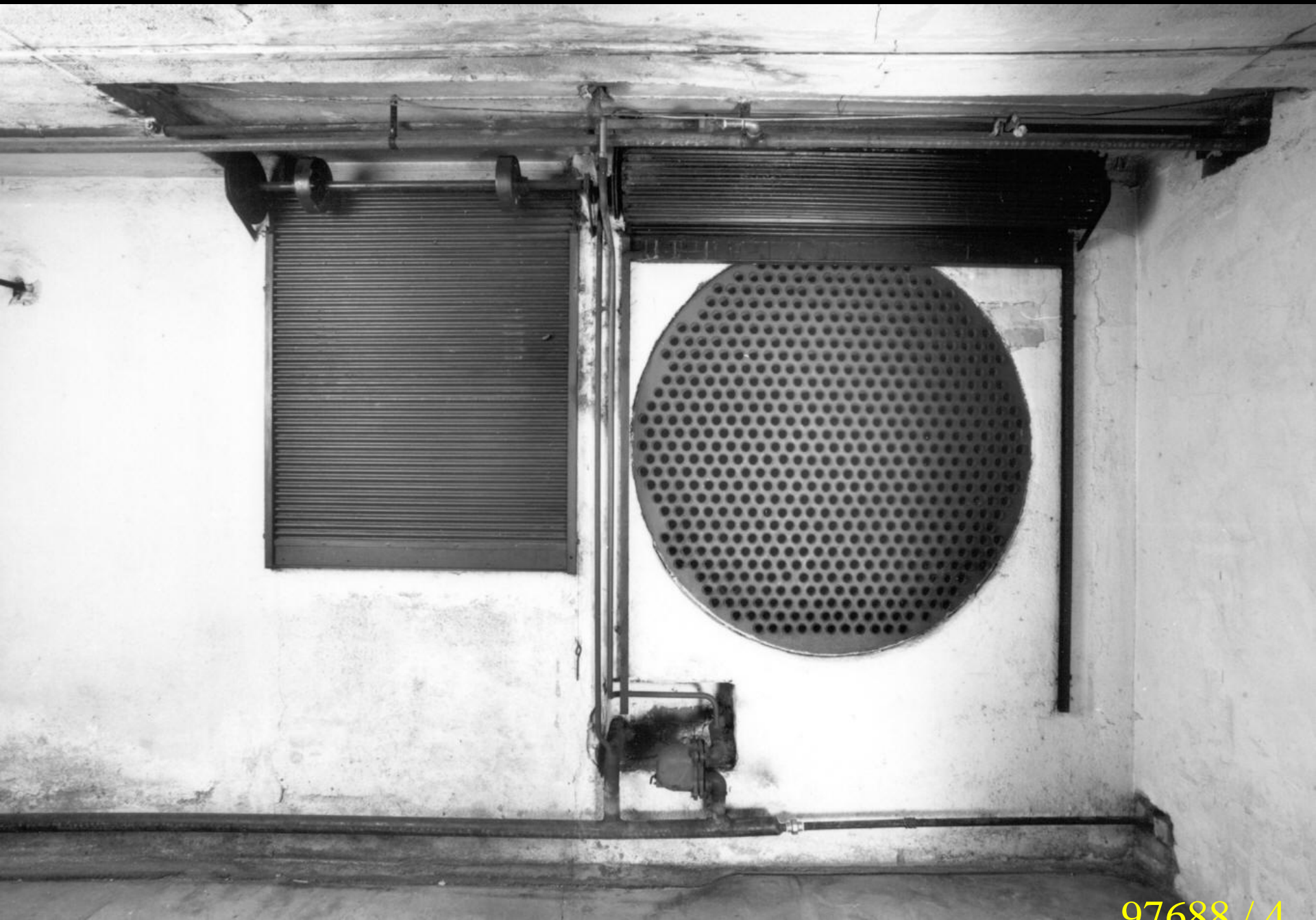
97688 / 1



97688 / 2



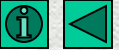
97688 / 3



97688 / 4



99762



99762